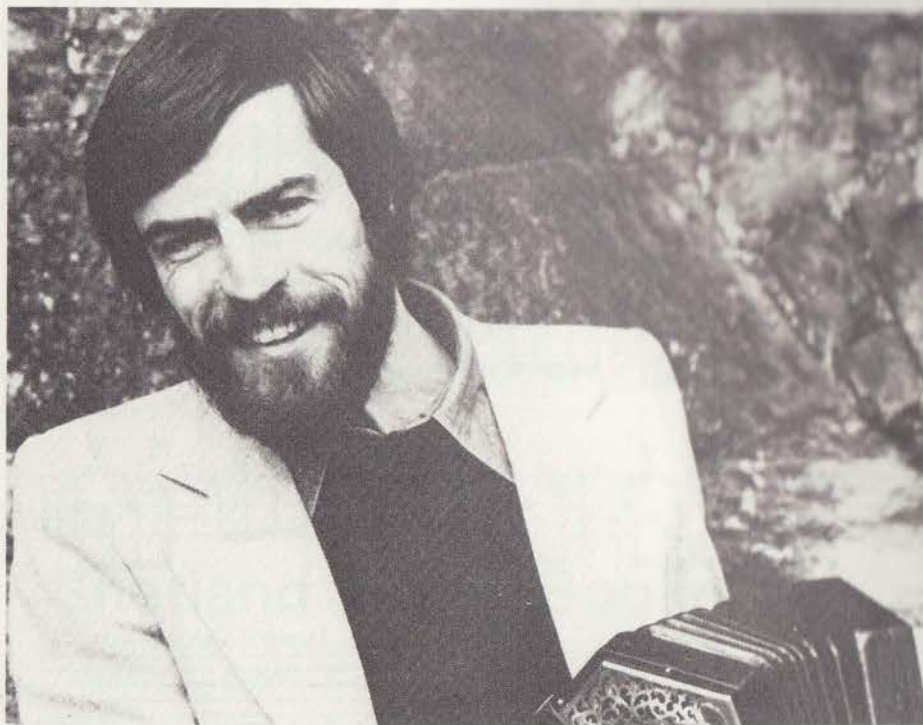




*Above: Whistlebinkies*

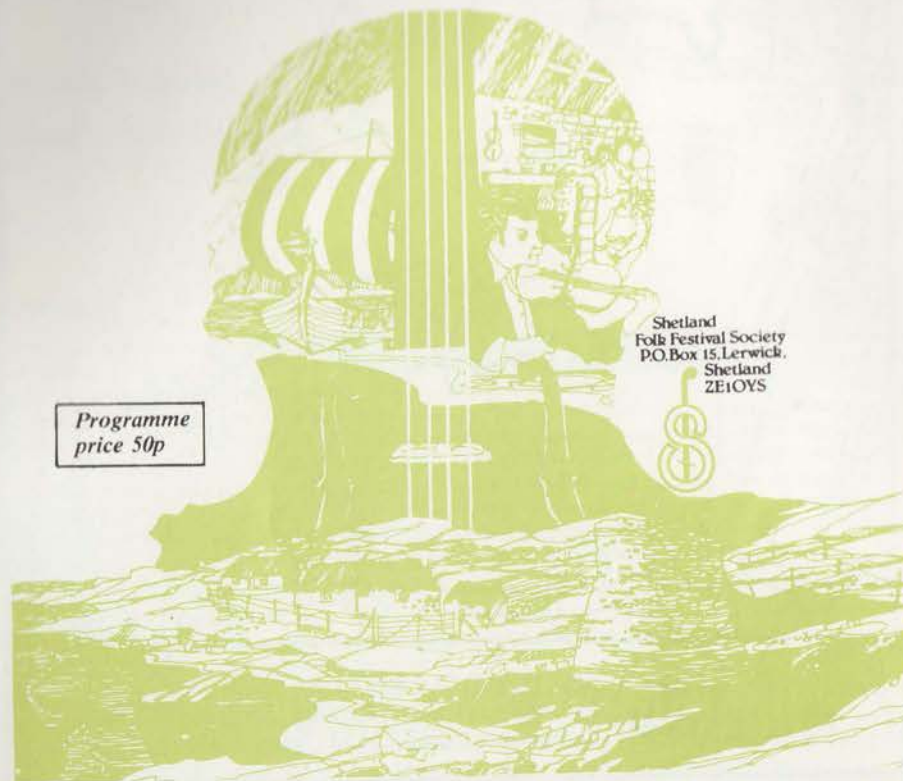
*Below: Alistair Anderson*



# SHETLAND FOLK FESTIVAL

29th April - 2nd May 1982

## Official Programme



Programme  
price 50p

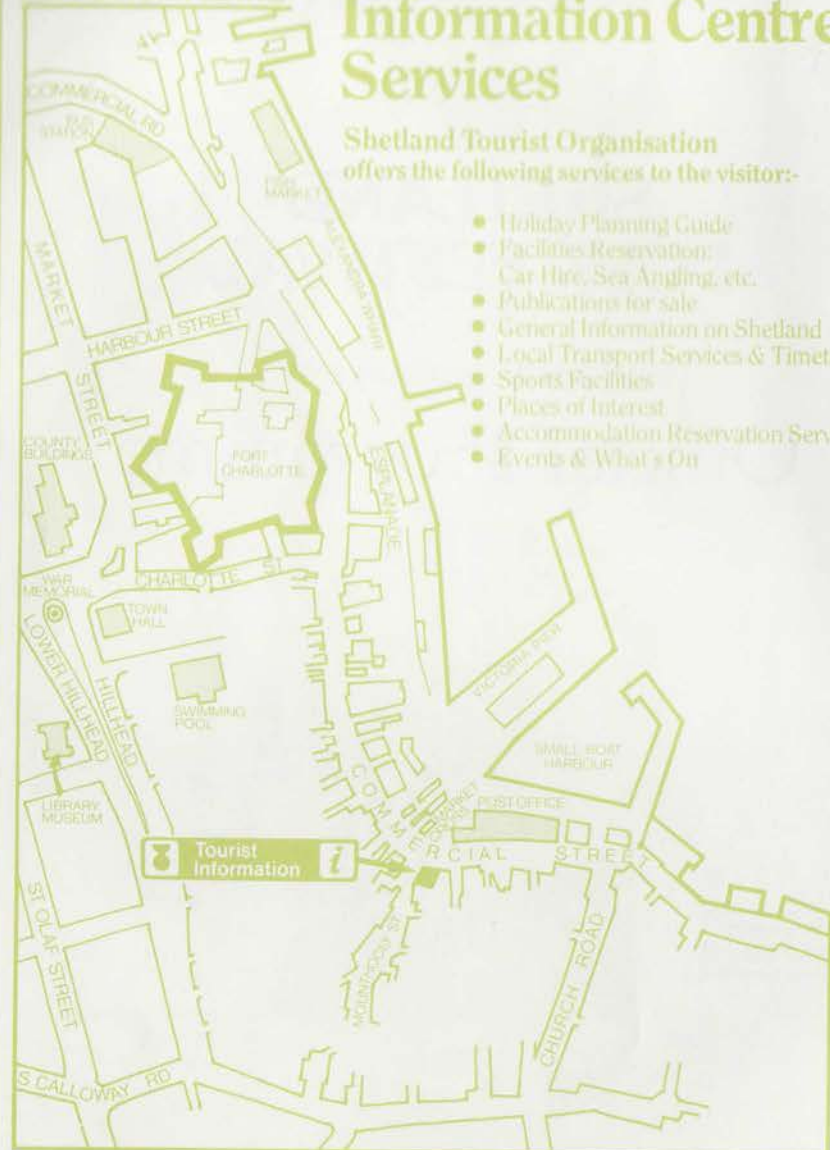
Shetland  
Folk Festival Society  
P.O. Box 15, Lerwick,  
Shetland  
ZE1 0YS

## LERWICK TOWN CENTRE

# Information Centre Services

Shetland Tourist Organisation offers the following services to the visitor:-

- Holiday Planning Guide
- Facilities Reservation: Car Hire, Sea Angling, etc.
- Publications for sale
- General Information on Shetland
- Local Transport Services & Timetables
- Sports Facilities
- Places of Interest
- Accommodation Reservation Service
- Events & What's On



**SHETLAND TOURIST ORGANISATION**  
Information Centre, Lerwick, Shetland ZE1 0LU  
Telephone: (0595) 3434; Telex 75119

## WELCOME!

"Kum de wis" is the friendly invitation in Shetland to come along and enjoy yourself! We hope you will do just that as we welcome you to the second Folk Festival in Shetland. This has proved to be not only a unique musical experience but also the biggest annual celebration of music to be staged in the islands.

Shetland's second Folk Festival features many top-rate musicians, both local and visiting, in a community festival to be held throughout the islands, from Baltasound to Boddam and Whalsay to Walls.

To complement the musical programme, there will be workshops on the fiddle, accordion, concertina, storytelling and dance. Craft Workshops will feature knitwear, lapidary, kishie making, fiddle making, etc., and craft goods will be on display and for sale.

Shetland has a unique musical tradition with the emphasis on the fiddle, played with a distinctive style and a lively toe-tapping rhythm. The Festival will naturally give prominence to the fiddle and its variety of styles plus demonstrations of fiddle making.

A feast of entertainment has been arranged and no doubt there will be many 'foys' (ceilidhs) outwith official programmes so we hope you enjoy the Folk Festival and that your memories will bring you back for more next year.

## OFFICIAL OPENING

The 1982 Guizer Jarl of 'Up-Helly-A', Hakon Hakonson, will perform the opening ceremony of the Folk Festival at 2.00 p.m. on Thursday, 29th April, at Islesburgh Community Centre.

## FORMAT

Events in the country areas and islands (Baltasound, Yell, Walls, Tingwall, Whalsay, Voe, Sandwick, Hamnavoe, Boddam) will start with a full evening's entertainment of a Folk Concert, Supper and Dance. The concerts all commence at 7.30 p.m., and the admission ticket covers the whole evening. Bar facilities will be available throughout the evening. During the concert drinks will be available, but we would ask you to respect the artistes on stage and organise your requirements as quietly as possible. For everyone's sake PLEASE KEEP THE NOISE DOWN DURING THE PERFORMANCES — although we hope you will join in by clapping your hands and tapping your feet as the occasion merits. Each area may be slightly different but in general the concert will break for a supper at about 9.00 p.m. The second part of the concert will finish at approximately 11.00 p.m. to be followed immediately by the dance. The official part of the evening will wind up at about 1.00 a.m.

At the Garrison Theatre in Lerwick, concerts will commence at 7.30 p.m. This is a seated auditorium so that dancing (other than on stage during the concert) will not be possible. The concerts should finish at 9.30/10.00 p.m. No refreshments or drinks will be served in the Theatre but the Festival Club is open to members — see details on page 19.

On the Sunday evening the Festival Foy will be held in the hotels in Lerwick plus the Festival Club. Four venues will be open and you will have an opportunity to see a great many artistes as they circulate among the halls 'Up-Helly-A' style. This is a new arrangement for the festival and promises to be popular as it maximises the number of artistes to be enjoyed by each audience.



# Kveldsro House Hotel



**Superb cuisine, excellent accommodation  
and a well-stocked bar**

*Owned and managed by Shetlanders*  
**Jim & Irene Williamson**  
Telephone Lerwick (0595) 2195

# GRAND HOTEL

COMMERCIAL STREET, LERWICK, SHETLAND  
Phone Lerwick (0595) 2018



**Bar Lunches, Lunches and Dinner  
served daily**

**Function Hall available, with Bar**

**All Bedrooms with Colour TV,  
and Teamaking facilities**

**Several rooms overlooking Lerwick Harbour**



Owned and Managed by Mr & Mrs C. Fordyce

## PRICES

The ticket prices for each event are as follows:

**FOLK CONCERT, SUPPER and DANCE** in Unst, Yell, Walls, Tingwall, Whalsay, Voe, Sandwick, Hamnavoe and Boddam:

Adults	£6.00
Adult SFFS Members	£5.00
Children (Under 14 years)	£3.00
Children SFFS Members	£2.00

**GARRISON THEATRE EVENING CONCERTS**, Thursday, Friday and Saturday:

Adults	£5.00
Adult SFFS Members	£4.00
Children (Under 14 years)	£3.00
Children SFFS Members	£2.00

**GARRISON THEATRE AFTERNOON CONCERT** by Robin Williamson - Sunday:

All tickets	£2.00
-------------	-------

## Festival Foy

Admission charges to Festival Foy venues on Sunday evening:

Adults	£4.00
Adult SFFS Members	£3.00
Children (All under 14)	£2.00

*NOTE - Festival Foy in the Festival Club in Islesburgh Community Centre, open to members only.*

## Festival Club

Festival Club admission charges per visit (members only) are:

11.00 a.m. to 2.00 p.m.	50p
5.00 p.m. to 1.00 a.m.	50p

## Craft Workshop

Admission Free

## TICKETS

Tickets will be available from the Tourist Office at Market Cross, Lerwick.  
Tickets for rural concerts will also be available in local shops or post offices.

## OPENING HOURS (Tourist Office) from Saturday 3rd April

Monday to Friday	9.00 a.m. to 1.00 p.m., 2.15 p.m. to 5.00 p.m.
Saturday	11.00 a.m. to 1.00 p.m., 2.00 p.m. to 3.00 p.m.

**Members must produce 1982 Membership Card** to obtain discount on tickets.

We would recommend that you arrange your tickets in good time to ensure admission. Unsold tickets may be available at the door prior to concerts.

*Please ensure when ordering tickets by telephone to specify: concert venue, date, time, numbers of adult and/or children's tickets and SFFS membership number if applicable. Allow five/six days minimum for return of tickets by post.*

# For all your FOLK RECORDS come to . . .



We will be carrying a complete range of Records and Tapes of many of the artists participating in this year's festival. In addition we will have a variety of Folk LP's and Tapes second to none in Shetland.

*We also have a complete selection of Shetland Records and Tapes including the following:*



£3.99 LP and Tape  
Plus 40p p&p



£3.99 LP and Tape  
Plus 40p p&p



£2.50 EP  
Plus 20p p&p

All these Records available by post from:

## THE RECORD GALLEY

155 COMMERCIAL STREET - LERWICK - SHETLAND

Telephone Lerwick 0595 - 2030

*Your FOLK MUSIC centre in Shetland*

## ARTISTES:

### ALISTAIR ANDERSON

Best known as 'King of the Concertina' Alistair is also an accomplished Northumbrian piper. A young musician from Northumberland, Alistair's extensive and varied repertoire includes traditional music from North East England, Scotland and Ireland played with panache and virtuosity.

### CHARLIE ALLEN

Charlie will be well-known to listeners to Radio Scotland as a presenter of farm programmes. He now concentrates on the producer's side of the agricultural section at the Beeb. He is also very well known for Aberdeenshire bothy ballads and humorous songs.

### MICKIE AINSWORTH & ROB GORDON

Two featured and accomplished accordionists who will be well known to Scottish dance music fans. Mickie Ainsworth has been to Shetland before with the Ian Powrie Band in the days of the Islesburgh Tours. Rob Gordon is well known in Scotland as the leader of his own dance band.

### TOM ANDERSON & WILLIE JOHNSON

Renowned duo representing the very best in Shetland traditional music. Thanks to Tom's dedicated and unstinting effort he has been largely responsible for spreading the news and style of Shetland fiddle playing throughout the world. Tom has taught most of Shetland's young and accomplished fiddlers including musicians like Aly Bain, Davy Tulloch and Trevor Hunter.

Willie Johnson, referred to humorously and affectionately by Sean McGuire as 'Box Bed Willie' has long been regarded as one of the top accompanists on the Shetland music scene. Virtuoso of many instruments Willie is held in the highest regard by good musicians everywhere.

### FREELAND BARBOUR & SANDY COGHILL

Playing the piano key and button key accordion respectively, this respected and very popular duo are returning to Shetland at the request of many admirers. Freeland and Sandy will be joining the rest of the Wallochmor Ceilidh Band for the dances.

### BILL BARCLAY

Bill comes from Edinburgh and is well known all over Britain for his humorous stories and songs including his hit single "The Twelve Days of Christmas". Bill has been in the business for 21 years now and his tours have included appearances with Rod Stewart, Dusty Springfield, Elton John, and Bill Haley.

### HAUK & KNUT BUEN

Hauk & Knut from the Telemark district of Norway are among the best hardanger fiddlers in that country, playing in the tradition of dance rhythm as well as the rhythm of older tunes. Hauk was in the Shetland Folk Festival last year and his brother Knut has travelled a great deal to perform in concerts, particularly the Bergen Festival.

### RHODA BULTER

Rhoda needs no introduction to Shetland audiences and her poems in the Shetland dialect have resulted in several books and records. With an extraordinary command of the local dialect Rhoda's recitations cover a broad spectrum from tender sentimentality to the immensely humorous.

### COLIN & ALAN

Two young Shetland musicians from Lerwick and Gulberwick whose dexterity on the piano accordion has delighted audiences at the Shetland Accordion and Fiddle Club. The boys are becoming fairly regular performers at local concerts and we are sure you will agree that these young men will go far.



# THE LOUNGE BAR

MOUNTHOOLY STREET - LERWICK



Why not bring your musical instrument along and enjoy the warm and friendly atmosphere of the Lounge Bar where traditional music has always been played



## Scalloway Hotel

Centrally situated on the West Mainland of Shetland, only six miles from Lerwick and overlooking Scalloway Harbour. The bedrooms have colour television and telephone, and some have private bathroom. The Hotel is fully licensed and has an *à la carte* restaurant.

MORNING COFFEE - BAR LUNCHES - AFTERNOON TEAS

*Proprietor — Norman Gilbertson*

MAIN STREET, SCALLOWAY, SHETLAND, ZE1 0TR

Telephone (0595-88) 444/445

Artists — (Continued)

### RONNIE COOPER & IAN BURNS

A pianist and a fiddle player linked together here only because of their extraordinary composing abilities. Both could have rested on their laurels after writing classics like Ronnie's "Miss Susan Cooper" or Ian's "Spootiskerry" but both have gone on to write other superb tunes. One story is that when Ian had written a new tune he'd take it round to try out on Ronnie. Ian knew after some time through the tune whether it was a winner or not. If he liked it Ronnie would shout 'again' towards the end, if he didn't he'd say 'Aha' after the first time through.

### CHARLIE COWIE

A fiddle player from Stranraer, Charlie has taken part in many contests and has made several TV appearances. His speciality is in the pipe-march type of tune and Charlie was responsible for the revival of a tune called the Conundrum.

### CULLIVOE DANCE BAND

From the north of the island of Yell, this band is becoming increasingly popular at concerts and dances on the Shetland Mainland. The band comprises Gordon Jamieson on the accordion, his wife Anne on the piano and brother Victor on the bass guitar.

### BOBBY EAGLESHAM

Bobby has been singing Scottish and contemporary songs for over 12 years professionally and originally performed with Dick Gaughan and more recently, was an integral part of 'Five Hand Reel', one of Britain's top electric folk bands.

### TREVOR HUNTER

Employed full time by Shetland Islands Council as teacher of fiddle music, Trevor travels between 200 and 300 miles each week teaching the fiddle to his 60 pupils who include several potentially outstanding players. A gifted player and teacher, Trevor has been leader of the Shetland Fiddlers for the last two years.

### FENSTANTON MORRIS

The Fenstanton team come from Cambridgeshire and are a mixed male and female side performing Cotswold Morris, Border Morris, and Cambridgeshire Molly Dancing. They have their own mummens and the musicians play melodeon, concertina, pipe and tabor. They are dressed in Top Hats, Black Breeches, Red and Purple baidricks and ribbons and bells, and we are to be treated to Stick, Clog and Handkerchief dances, Molly Dancing and a mummings play.

### ARCHIE FISHER

A very talented song-writer who has been singing professionally since the early sixties, Archie is one of the famous Fisher family (Cilla his younger sister was at the Folk Festival last year with Artie Trezise). He has been involved in folk music at all levels from solo work in folk clubs and festivals to producing records and writing and broadcasting for television and radio.

### DA FUSTRA

A popular local band. Needing no introduction to Shetlanders or indeed to a variety of visiting accordion players. Last year Ian McPhail and Brian Griffin guested with Da Fustra; this year it is the turn of Mickie Ainsworth and Rob Gordon.

### GIBBY GRAY

Gibby plays in the Unst tradition, his native island and home. He is one of the oldest traditional fiddlers in Shetland today and responsible for giving us many old tunes which would otherwise have been forgotten. He is steeped in traditional music with an amazing repertoire and draws a bow with great verve in providing 'real' folk fiddling.



# QUEENS HOTEL

## PACKAGE DEAL FOR SHETLAND FOLK FESTIVAL

The Queens Hotel is in the centre of Lerwick, ideally situated as a base for the Folk Festival.

Five-day package which includes three tickets to the Garrison Theatre, Lerwick, with optional to the last night of the Festival at an extra charge. Your package commences on Wednesday, 28th April from Aberdeen, departing Lerwick on Tuesday, 4th May.

A shared cabin is reserved on the ferry for return crossing, all meals provided on board ship, transfers to hotel on arrival, dinner, bed and breakfast in the Hotel sharing a twin or double without private bath. Discount vouchers for various shops in town. Cost £145.00 per person. Private bath supplement £30 per room, single room supplement £20 per room. £20 deposit per person is payable at time of booking.

We also have a full summer tour programme of 7 and 14 day holidays.

Reservations: Contact N. R. Wilkins, Queens Hotel of Shetland Ltd.  
Tel. 0595 - 2826 and 4206.

## SHETLAND RECORDINGS ALWAYS IN STOCK

### AMERICAN & FRENCH CANADIAN RECORDS STOCKED AND AVAILABLE TO ORDER

RECORDS · CASSETTES · RADIO · TV · HI-FI · CASSETTE  
RECORDERS · MUSICAL INSTRUMENTS · VIDEO RECORDERS

**The Music**  
**Box** 116 Commercial Street  
& Freefield, Lerwick

Tel. LERWICK 3993

## Artistes - (Continued)

### INGER, PELLE & UNO

Inger and Pelle are regular visitors to Shetland from Sweden. They play a harmonic combination of the fiddle and nyckelharpa which is a most uncommon instrument with four strings and about forty understrings. The under strings are used in a similar manner to that of the hardanger and a chromatic scale is provided by the keys on the instrument. It is thought that the Shetland 'gue' could have been the early forerunner of this instrument. With their friend Uno they will provide a feast of good music.

### IOLAIR

One of Scotland's leading groups which we expect to be very highly regarded in Shetland. Consisting of Norman Stewart, Janice Clark and Doug Stewart. They are well known throughout Scotland for their unique style of Scottish traditional music.

### JOHN (CURLY) JAMIESON

A former seaman on the whaling ships sailing to South Georgia, Curly is one of the great characters on the Shetland music scene. He began playing fiddle at an age when he and his brother travelled by pony and cart to the dances and he is one of the founder members of the Shetland Fiddlers. A man totally bound up in his music he is one of the best sight readers currently with the Fiddlers and even on the coach on tour between concerts his foot never stops tapping. His 'one man band' with guitar and mouth organ pre-dates Bob Dylan by some thirty years!

### JOOST WIZ

When Hom Bru left Shetland, the gap in the local music scene was soon filled by a band which in its early career was known as the 'Wiz Band' or advertised in one area at last year's festival as the 'Wiz Bang'. The band features ex-Hom Bru members Davie Henry and Alex Johnson together with Kirsty McMillan, Jenny Slater and Marie McMillan.

### MID YELL LASSES

The girls of the Mid Yell School Choir are worthy artistes in the Shetland Folk Festival. The choir have delighted their audiences whether in concert or with their carol singing. They performed at Yell in last year's Festival and they will delight the audiences in Yell and Lerwick this year with some traditional Shetland songs. We understand that hand-bells may be added to this year's performance.

### BOBBY PETERSON

Bobby comes from a great fiddling tradition. His father was a Greenland whaler and it was to him we are indebted for the tune 'Willafjord', one of the 'Greenland' tunes. Bobby's style is different to perhaps any in Shetland with its dancing rhythm and beautiful ringing strings. His contribution to Shetland traditional music has been most extensive. We are very pleased to have Bobby to assist us in our workshop.

### LARRY PETERSON

A well-respected local concert artiste who has performed throughout Shetland over a good number of years, Larry is perhaps best known as the father in the Larry and Shirley duo with special emphasis on combined harmony of voices. Larry normally provides his own accompaniment on the guitar and has a wide repertoire of songs to please everyone.

### MAGGIE ROBERTSON

Originally from Aith on the west side of Shetland, Maggie is very involved in the traditional arts and crafts of Shetland. An accomplished knitter and exponent of Shetland dialect poetry, Maggie also finds time to act as treasurer to the Shetland Fiddlers.

### SHALDER

Better known locally as John Goldsmith, Betty Williamson and daughters Astrid and Kirsten, the group performs a range of material to the accompaniment of various musical instruments.



## Thursday, 29th April

### OFFICIAL OPENING OF FESTIVAL

1962 Gulen Jail Kenozy Cresser will officially open the folk festival at 2 pm in Isleburgh Community Centre. Everyone welcome.

### FESTIVAL CLUB

Isleburgh Community Centre. Open to S.F.F.S. Members and Artists only. 11 am to 2 pm; 5 pm to 1 am.

### CRAFT EXHIBITION & WORKSHOPS

Open 2 pm to 4.30 pm.

### BALTASOUND, UNST

commencing 7.30 pm

featuring  
SPÆLIMENNIR I HOYDOLUM (Faroe)  
ARCHIE FISHER (Scotland)  
CHARLIE ALLAN (Scotland)  
INGER, PELLE & UNO (Sweden)  
MICKIE AINSWORTH & ROB GORDON (Scotland)  
JOHN SPENCE (Local)  
GIBBY GRAY (Local)  
Dance to DA FUSTRA  
with MICKIE AINSWORTH & ROB GORDON  
Tickets: Adult S.F.F.S. Members £5, Non-Members £6;  
Children Members £2, Non-Members £3

### TINGWALL

commencing 7.30 pm

featuring  
DAVE SWARRICK & SIMON NICOL (England)  
IOLAIR (Scotland)  
HAUK & KNUT BUEN (Norway)  
KATHRYN TICKELL (England)  
ANN SINCLAIR & STEWART THOMSON (Local)  
LARRY PETERSON (Local)  
FENSTANTON MORRIS (England)  
CHARLIE SIMPSON (Local)  
Dance to THE VIKINGS DANCE BAND  
Tickets: Adult S.F.F.S. Members £5, Non-Members £6;  
Children Members £2, Non-Members £3

### VOE

commencing 7.30 pm

featuring  
ROBIN WILLIAMSON (USA)  
BOBBY EAGLESHAM (Scotland)  
CHARLIE COWIE (Scotland)  
FREELAND BARBOUR (Scotland)  
BOBBY TULLOCH (Local)  
FENSTANTON MORRIS (England)  
TREVOR HUNTER (Local)  
ROBBIE PEARSON (Local)  
MAGGIE ROBERTSON (Local)  
SHETLAND FIDDLERS (Local)  
CURLY JAMIESON (Local)  
Dance to FREELAND BARBOUR & FRIENDS  
Tickets: Adult S.F.F.S. Members £5, Non-Members £6;  
Children Members £2, Non-Members £3

### GARRISON THEATRE, LERWICK

commencing 7.30 pm

featuring  
WHISTLEBINKIES (Scotland)  
ALISTAIR ANDERSON (England)  
DAVY TULLOCH & VERONIQUE NELSON  
(Local/England)  
BILL BARCLAY (Scotland)  
TOM ANDERSON & WILLIE JOHNSON (Local)  
JOOST WIZ (Local)  
RHODA BUTLER (Local)  
SHETLAND'S YOUNG HERITAGE (Local)  
COLIN & ALAN (Local)  
SHALDER (Local)  
Tickets: Adult S.F.F.S. Members £4, Non-Members £5;  
Children Members £2, Non-Members £3

Note: The programme may be subject to change without prior notification.

## Friday, 30th April

### FESTIVAL CLUB

Isleburgh Community Centre. Open to S.F.F.S. Members and Artists only. 11 am to 2 pm; 5 pm to 1 am.

### CRAFT WORKSHOPS & EXHIBITIONS

Open 11 am to 4.30 pm

### MID YELL

commencing 7.30 pm

featuring  
SPÆLIMENNIR I HOYDOLUM (Faroe)  
ARCHIE FISHER (Scotland)  
BILL BARCLAY (Scotland)  
INGER, PELLE & UNO (Sweden)  
DAVY TULLOCH & VERONIQUE NELSON  
(Local/England)  
MID YELL LASSES (Local)  
JOOST WIZ (Local)  
Dance to THE CULLIVOE DANCE BAND  
Tickets: Adult S.F.F.S. Members £5, Non-Members £6;  
Children Members £2, Non-Members £3

### HAMNAVOE

commencing 7.30 pm

featuring  
DAVE SWARRICK & SIMON NICOL (England)  
ALISTAIR ANDERSON (England)  
FREELAND BARBOUR & SANDY COGHILL (Scotland)  
ROBBIE PEARSON (Local)  
COLIN & ALAN (Local)  
TREVOR HUNTER (Local)  
CURLY JAMIESON (Local)  
FENSTANTON MORRIS (England)  
SHETLAND FIDDLERS (Local)  
MAGGIE ROBERTSON (Local)  
Dance to THE WALLCHMOR CEILIDH BAND  
with FREELAND BARBOUR & SANDY COGHILL  
Tickets: Adult S.F.F.S. Members £5, Non-Members £6;  
Children Members £2, Non-Members £3

### BODDAM

commencing 7.30 pm

featuring  
WHISTLEBINKIES (Scotland)  
IOLAIR (Scotland)  
HAUK & KNUT BUEN (Norway)  
CHARLIE COWIE (Scotland)  
SHALDER (Local)  
MICKIE AINSWORTH & ROB GORDON (Scotland)  
TOM ANDERSON & WILLIE JOHNSON (Local)  
ANN SINCLAIR & STEWART THOMSON (Local)  
RHODA BUTLER (Local)  
SHETLAND'S YOUNG HERITAGE (Local)  
Dance to DA FUSTRA  
with MICKIE AINSWORTH & ROB GORDON  
Tickets: Adult S.F.F.S. Members £5, Non-Members £6;  
Children Members £2, Non-Members £3

### GARRISON THEATRE, LERWICK

commencing 7.30 pm

featuring  
ROBIN WILLIAMSON (USA)  
BOBBY EAGLESHAM (Scotland)  
KATHRYN TICKELL (England)  
CHARLIE COWIE (Scotland)  
LARRY PETERSON (Local)  
JOHN SPENCE (Local)  
FENSTANTON MORRIS (England)  
CHARLIE SIMPSON (Local)  
Tickets: Adult S.F.F.S. Members £4, Non-Members £5;  
Children Members £2, Non-Members £3  
Note: The programme may be subject to change without prior notification.

## Saturday, 1st May

### FESTIVAL CLUB

Isleburgh Community Centre. Open to S.F.F.S. Members and Artists only. 11 am to 2 pm; 5 pm to 1 am.

### CRAFT WORKSHOPS & EXHIBITIONS

Open 11 am to 4.30 pm

### MUSIC WORKSHOPS

STYLES OF FIDDLING, 2.30 to 3.15 pm  
DANCE, 3.15 to 4.30 pm  
ACCORDION & CONCERTINA, 3.15 to 4.30 pm  
See page 21 for further details

### WALLS

commencing 7.30 pm

featuring  
WHISTLEBINKIES (Scotland)  
BOBBY EAGLESHAM (Scotland)  
CHARLIE COWIE (Scotland)  
FREELAND BARBOUR & SANDY COGHILL (Scotland)  
LARRY PETERSON (Local)  
SHETLAND'S YOUNG HERITAGE (Local)  
JOHN SPENCE (Local)  
TOM ANDERSON & WILLIE JOHNSON (Local)  
SHALDER (Local)  
RHODA BUTLER (Local)  
Dance to THE WALLCHMOR CEILIDH BAND  
with FREELAND BARBOUR & SANDY COGHILL  
Tickets: Adult S.F.F.S. Members £5, Non-Members £6;  
Children Members £2, Non-Members £3

### WHALSAY

commencing 7.30 pm

featuring  
SPÆLIMENNIR I HOYDOLUM (Faroe)  
ARCHIE FISHER (Scotland)  
CHARLIE ALLAN (Scotland)  
DAVY TULLOCH & VERONIQUE NELSON (Local/England)  
ANN SINCLAIR & STEWART THOMSON (Local)  
JOOST WIZ (Local)  
Dance to THE WHALSAY BAND  
Tickets: Adult S.F.F.S. Members £5, Non-Members £6;  
Children Members £2, Non-Members £3

### SANDWICK

commencing 7.30 pm

featuring  
ROBIN WILLIAMSON (USA)  
ALISTAIR ANDERSON (England)  
KATHRYN TICKELL (England)  
BILL BARCLAY (Scotland)  
MICKIE AINSWORTH & ROB GORDON (Scotland)  
SHETLAND FIDDLERS (Local)  
MAGGIE ROBERTSON (Local)  
FENSTANTON MORRIS (England)  
TREVOR HUNTER (Local)  
COLIN & ALAN (Local)  
CURLY JAMIESON (Local)  
CHARLIE SIMPSON (Local)  
Dance to DA FUSTRA  
with MICKIE AINSWORTH & ROB GORDON  
Tickets: Adult S.F.F.S. Members £5, Non-Members £6;  
Children Members £2, Non-Members £3

### GARRISON THEATRE, LERWICK

commencing 7.30 pm

featuring  
DAVE SWARRICK & SIMON NICOL (England)  
INGER, PELLE & UNO (Sweden)  
IOLAIR (Scotland)  
HAUK & KNUT BUEN (Norway)  
MID YELL LASSES (Local)  
ROBBIE PEARSON (Local)  
Tickets: Adult S.F.F.S. Members £4, Non-Members £5;  
Children Members £2, Non-Members £3

Note: The programme may be subject to change without prior notification.

## Sunday, 2nd May

### FESTIVAL CLUB

Isleburgh Community Centre. Open to S.F.F.S. Members and Artists only. 11 am to 2 pm; 5 pm to 1 am.

### MUSIC WORKSHOPS

FIDDLE, 2.30 to 3.15 pm  
STORYTELLING, 3.15 to 4.30 pm  
See page 21 for further details

### GARRISON THEATRE, LERWICK

CONCERT by ROBIN WILLIAMSON  
Commencing 3.30 pm  
Tickets: £2 each

### FESTIVAL FOY

commencing 7.30 pm

at  
LERWICK HOTEL  
Resident Band  
GRAND HOTEL  
Resident Band, Vikings Dance Band  
HAYFIELD HOTEL  
Resident Band, Da Fustra Dance Band  
FESTIVAL CLUB, ISLEBURGH COMMUNITY CENTRE  
(Members Only)  
Resident Band, Wallochmor Ceilidh Band  
Tickets: Adult S.F.F.S. Members £3, Non-Members £4;  
Children Members £2, Non-Members £3

Note: The programme may be subject to change without prior notification.

# Shetland Folk Festival Society

## PROGRAMME



# P&O Ferries



A GREAT DEAL FROM A GREAT COMPANY.

LOOK OUT  
FOR OUR GREAT  
CHEEPIE OFFERS.



Dover-Boulogne  
Southampton-Le Havre  
Hull-Rotterdam\*  
(EUROPOORT)  
Hull-Zeebrugge\*  
Aberdeen-Lerwick  
(SHETLAND)  
Scrabster-Stromness  
(ORKNEY)

\* Operated by North Sea Ferries A P&O/Nedlloyd Joint Venture.  
P&O Ferries, Beaufort House, St Botolph St., London EC3A 7DX.  
Telephone: 01-623-1505. Telex: 47485



## Shetland Silvercraft



from  
J. G. RAE, LTD.,  
Jewellers  
92 Commercial Street, Lerwick

Silver and gold jewellery wholly produced  
in the Shetland Islands

also available from our workshops at  
SOUNDSIDE, WEISDALE.



Artists — (Continued)

### SHETLAND FIDDLERS

After a very busy twelve months, the Shetland Fiddlers are now trying to find time to make their third (long overdue) record. Last year they toured the North of England, topped the bill at the Auchtermuchty Folk Festival, toured Fife for 'The Arts in Fife', appeared on Pottle Mill at One and guested at the 3rd Edinburgh Folk Festival.

### SHETLAND'S YOUNG HERITAGE

Young Shetland musicians, mainly pupils of Tom Anderson, who have formed a society to preserve and perform Shetland tunes which have a relationship with the old Norse melodies. One of the aims of the society is to preserve the old music, collect material, and pass it on in its original form.

### CHARLIE SIMPSON

A singer songwriter with his own individual, subtle style Charlie also plays fiddle and the Town Hall bells. An adventurer and member of the Up-Helly-A' Committee, Charlie has been out of sight for the past year building a house. We heard, though, that the housewarming was a great success!

### ANN SINCLAIR & STEWART THOMSON

Everyone who saw Ann and Stewart last year will welcome them back. Brother and sister from Fair Isle, the duo have a wide variety of music. Both are excellent singers, Ann plays the guitar and Stewart the accordion.

### SPAELIMENNINIR I HOYDOLUM

From Faroe, 'the fiddlers or players from Hoydalar', so called because the group was founded in the secondary school in Hoydalar, just north of Torshavn. On previous visits to Shetland they have always played to full houses and appreciative audiences. The group demonstrates many styles of playing principally from Denmark, Sweden and Scotland.

### JOHN SPENCE

A native of Unst with a great line in story telling. He also plays the fiddle and is known for his compositions. John's family are very accomplished musicians.

### GEORDIE SUTHERLAND

Geordie was born in North Nesting. He must have been influenced by his parents since the 'Vidlin' style has a distinct character which brings out the old erratic rhythm of the reel. He is one of the best living exponents of this style of music today, which is essential in a workshop when listening to different styles. Geordie's playing is really worth hearing and Shetland's musicians are indebted to him for his contribution to Shetland fiddle music.

### DAVE SWARBRICK & SIMON NICOL

Dave has a long successful history as a folk fiddler and his first visit to Shetland was for last year's Folk Festival. Best known for his time with the Ian Campbell Folk Group, with Martin Carthy and until fairly recently, with the late and much lamented Fairport Convention. He is the fiddler who, especially in the South, has probably inspired many players to take up the instrument. Simon is principally a guitarist but no mean vocalist either, he helped found Fairport Convention back in 1967 and stayed with them through most of their many line-ups except for a brief period in the early seventies. Associated also with the big folk bands including the Morris On group and the Albion Country Band and its successors, Simon is here again as the other half of the Swarbrick act.

### KATHRYN TICKELL

This very professional young musician from Newcastle came to last year's Festival on the personal recommendation of Tom Anderson and the number of encores demanded was good reason to bring her back. She not only plays the fiddle but also the Northumberland Pipes.



# HAGDALE LODGE

BALTASOUND, UNST, SHETLAND.

**Come and visit Britain's most  
Northerly Hotel**

**Bed & Breakfast, Lunches,  
Evening Meals.**

**Functions Catered for.**

**FULLY LICENSED**

**FOR RESERVATIONS TELEPHONE BALTASOUND (095781) 484**



TAXIS — SELF-DRIVE — MINI-BUS — COACHES  
AIR — SEA — RAIL — BUS  
PACKAGE HOLIDAYS

whatever your travel needs contact

## JOHN LEASK & SON

Travel Agents and Transport Operators

THE ESPLANADE, LERWICK

Telephone Lerwick 3162. Telex 75243.



Artists — (Continued)

### BOBBY TULLOCH

Not many people can claim to have been immortalised in a tune for a Boston Two-Step but Bobby can through Freeland Barbour's 'The Ornithologist'. As well as playing fiddle and singing his own songs, Bobby has composed some splendid tunes himself. He is based on Yell as Shetland's representative for the Royal Society for the Protection of Birds.

### DAVY TULLOCH & VERONIQUE NELSON

When Tom Anderson first began teaching Shetland fiddle in the local schools, Davy was the first student to volunteer for lessons. In Tom's opinion Davy has been his most successful school pupil. A comprehensive, and at times brilliant player, he now lives in Edinburgh and teaches fiddle.

Veronique has been playing with Davy for about 18 months and has adopted the Shetland style of playing. She is from England and while studying at Edinburgh has taken a Master of Literature degree in Spanish Bagpipe Music!

### WALLOCHMOR CEILIDH BAND

Not only Freeland Barbour and Sandy Coghill on accordion but also Jim Barne on fiddle, Gus Miller on drums and Neil McMillan doubling on piano or bass. One of the top Scottish dance bands returning to Shetland as a result of overwhelming requests. Terrific music and top entertainment.

### WHISTLEBINKIES

'A wandering minstrel who played the whistle on a binkie (bench) at penny weddings'. The group comprises Eddie McGuire, Rab Wallace, Rhona MacKay, Mick Broderick, Bob Nelson and Peter Anderson and performs music both old and newly composed in the Scottish tradition on Lowland Bagpipes, bodhran, clarsach, fiddle, flute, drums and vocal.

### ROBIN WILLIAMSON

Originally from Edinburgh, Robin Williamson is something of a legend as a founder of the Incredible String Band and an unique musical presence for almost twenty years. Robin now lives in Los Angeles and is currently working solo, performing original and traditional material on a wide variety of instruments including harp, Lowland pipes, and guitar. In the last year his tours have covered the USA, Canada, Europe, UK and Australia. A treat in store for the Shetland audiences; a solo Robin Williamson concert has been arranged for Sunday afternoon.

### JIM HALCROW

An accordion player and composer par excellence, Jim won't be taking part in the official programme but no doubt he'll be heard at the many informal sessions.

### VIKING DANCE BAND

A popular local band.

### WILLIE HUNTER

Reckoned by some to be the best fiddle player in Scotland as well as a composer of fine tunes, Willie is a very busy man and has asked us to leave him out of the formal concerts this year. However, no doubt Willie will be around and about at the club and other places.

### ROBBIE PEARSON

Doesn't sing or play an instrument but this young man is exceptionally observant — much to the delight and (sometimes) embarrassment of local worthies.

FULLY LICENSED — Monday to Saturday

★ BAR LUNCHES ★

★ BAR SUPPERS (to 9.30 p.m.) ★

LOUNGE BAR

Open 12 noon to 2 p.m.; 6 p.m. to 11 p.m.

\*\*\*\*\*

CLOSED ALL DAY SUNDAY

\*\*\*\*\*

Accommodation available :: Bed & Breakfast

**WARDHOUSE**

LEVENWICK — Tel. Bigton 250

*Hjaltasteyn*

*At Whiteness we produce fine hand-crafted jewellery from  
Shetland gemstones, silver, gold and enamel*

Hjaltasteyn jewellery is like Shetland music — beautifully crafted and with a sparkle that only comes from Shetland. During the Festival our crafts will be on display at the Festival Club in the Islesburgh Community Centre. Our products will be on sale, and are also available at retail outlets throughout Shetland.

**HJALTASTEYN, WHITENESS, SHETLAND, ZE2 9LJ**  
Telephone Gott (059 584) 351

## CRAFT EXHIBITIONS & WORKSHOPS

The Islesburgh Community Centre in King Harald Street will feature a wide selection of Shetland knitwear and an exhibition of photographs depicting Shetland from the early days of photography to the present time. The emphasis will be on knitwear with demonstrations of carding and spinning as well as hand and machine knitting. It will include lace work, openwork, Fair Isle yoke, all over Fair Isle, Shawls, etc. There will also be demonstrations of fiddle and 'kishie' making. A kishie is the traditional basket which is still in common use on many of Shetland's crofts.

All the people involved in creating these crafts will be happy to explain their work to you.

## CRAFT MARKET

A craft market will be held on the ground floor in the Islesburgh Community Centre where a wide range of locally designed and made crafts will be on display. Shetland produces an excellent variety of local crafts, which for the festival are being gathered together from all corners of the islands.

On sale will be silvercraft, polished stone, glassware, shell craft, Fair Isle knitting, lace-work, pottery, drawings, weaving, sheepskin products, etc.

Come and see the crafts on show, and have a chat with their creators.

Craft Market, Exhibition and Workshops will be open as follows:

Thursday, 29th April	2.00 - 4.30
Friday, 30th April	11.00 - 4.30
Saturday, 1st May	11.00 - 4.30

## TEAS and SNACKS

Teas and snacks will be available from the cafeteria adjacent to the craft displays downstairs in Islesburgh Community Centre.

Hot snacks will also be available on sale in the Festival Club upstairs during the opening hours of the club (Members Only).

## FESTIVAL CLUB

For the duration of the festival, the first floor of Islesburgh Community Centre will be the venue for the Festival Club. This will be the ideal meeting place for visitors, artistes, musicians, and anyone who enjoys impromptu musical sessions. The club is open to **SFFS Members Only**, is licensed, and light snacks will be available.

The Festival Club is open

11.00. a.m. to 2.00 p.m.  
and 5.00 p.m. to 1.00 a.m.

Shetland Folk Festival Society reserves the right to restrict entry to the Festival Club.



## HAYFIELD HOUSE HOTEL

**BAR SNACKS** Any time we're open

**BAR LUNCHES** Monday to Sunday 12.30 to 2.00 p.m.

**EVENING BAR MEALS** 7.00 p.m. to 9.30 p.m.

### HUNTER'S LODGE RESTAURANT

Open for dinner seven nights a week

*Bookings only*

**DISCO SUPPERS** Every Wednesday and Saturday

Telephone: LERWICK 2396

- ★ *Shetland and Scottish Records and Tapes*
- ★ *Kodak and Polaroid Films, Cameras and Equipment*
- ★ *Specialists in Spicer Hallfield Photo Frames and Albums*

## R. W. BAYES

*Films and Equipment*

**143 COMMERCIAL STREET - LERWICK**

Telephone 3951

## MUSIC WORKSHOPS

A range of music workshops are being held on the first floor Islesburgh Community Centre on Saturday and Sunday afternoons. Entry to the music workshops is free but the festival committee reserve the right to limit numbers admitted.

Workshops have been arranged as follows:

### Saturday, 1st May

2.30 - 3.15 p.m.	STYLES OF FIDDLING Host - Tom Anderson
3.15 - 4.30 p.m.	ACCORDION AND CONCERTINA Hosts - Freeland Barbour, Sandy Coghill and Alistair Anderson
3.15 - 4.30 p.m.	DANCE Hosts - Spaelimenninir i Hoydolum and The Fenstanton Morris

### Sunday, 2nd May

2.30 - 3.15 p.m.	FIDDLE Host - Dave Swarbrick
3.15 - 4.30 p.m.	STORYTELLING Host - Albert Hunter

## SOUVENIRS

A range of Shetland Folk Festival merchandise has been produced for the Folk Festival and is available for sale at the Folk Festival Office.

T-Shirts with logo (adult sizes: small, medium, large)	£4.00 each
Children's T-Shirts	£3.00
Button Badges	20p
Adhesive PVC Stickers	50p
Lapel pins in silver	£2.95

## ACKNOWLEDGEMENTS

Shetland Folk Festival Society gratefully acknowledges the financial assistance and support for the 1982 Shetland Folk Festival from Shetland Islands Council, Highlands and Islands Development Board, P&O Ferries, Loganair, British Airways, Air Ecosse, Islesburgh Management Committee, Lerwick Boating Club, Shetland Tourist Organisation, Radio Shetland, Radio Orkney, The Shetland Times, and all SFFS members and hall committees, for their enthusiasm and hard work.

## *A few titles from our range of Folk and Poetry books . . .*

**SHETLAND FOLK BOOK Vol. VII.** Edited by J. J. Graham and J. Tait, £2.60.

**SHETLAND FOLK BOOK Vol. VI.** Edited by J. J. Graham and J. Tait, £1.80.

**AA MY SELVES — Poems 1940 -1980** by Stella Sutherland, £1.20.

**LINK STANES** by Rhoda Bulter. Illustrated by the author, £1.80.

**A DAY BETWEEN WEATHERS** by William J. Tait, £6.00.

**THE COLLECTED POEMS OF VAGALAND**, £4.50.

**SHETLAND FOLKLORE** by James R. Nicolson, £8.25.

**POEMS & SONGS** by Robert Burns, £2.75.

**THE SCOTTISH FOLKSINGER** by W. Buchan and P. Hall, £2.25.

**SONGS OF A SOURDOUGH** by Robert Service, £1.95.

**THE STORY OF SCOTTISH COUNTRY DANCING** by E. M. Hood, £1.95.

*Open MONDAY to SATURDAY, 9.00 a.m. to 5.00 p.m.*

The

### **Shetland Times Bookshop**

Commercial Street, Lerwick

Telephone LERWICK 3622

## **FESTIVAL TUNE**

This tune was composed for the Shetland Folk Festival by Tom Anderson and is the theme tune for this annual event.

REEL

## *Come awa in*

T. ANDERSON 20/6/80

